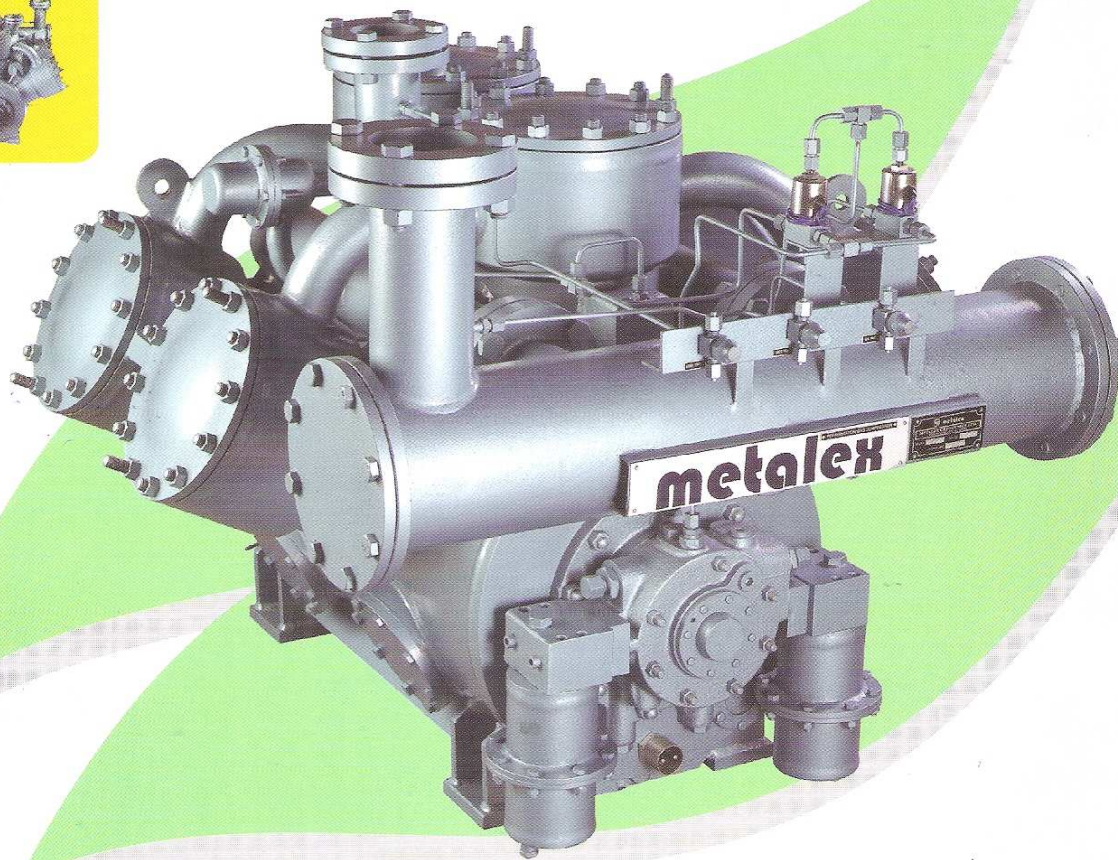


An ISO 9001:2000 Company

**metalex**<sup>TM</sup>

REFRIGERATION DIVISION

we care for YOU  
& the environment too...



**metalex**<sup>TM</sup>  
**IS SERIES**

DESIGN FEATURES :

- Air Cooled Compressor - Water Jacket eliminated.
- Inbuilt Loading & unloading Mechanism.
- Inbuilt Oil Heater enabling improved lubrication.
- Specially designed Pump for improved Oil regulation.

**AIR COOLED REFRIGERATION COMPRESSOR**

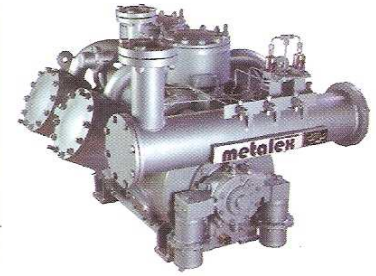
# IS SERIES REFRIGERATION COMPRESSORS

CONTINUAL INNOVATION IS A HALLMARK OF METALEX.

In keeping up with the promise, we at **metalex** are proud to present the IS-SERIES - AIR COOLED COMPRESSOR.

It is a principle strategy of the company to provide the latest and most valued product range. By achieving tremendous efficiencies and economy of scale with ongoing research process adding the committed focus of the work team has made the IS-Series the most awaited compressor.

- The IS-Series Range of reliable open type Reciprocating Compressors designed to work efficiently in almost any type Industrial Refrigeration installation and application.
- The IS-Series is suited for use with various refrigerant such as NH<sub>3</sub>, R404A, R507, R134A, R22 or new type of Refrigerant.
- The IS Series offers you maximum confidence & reliability due to its welded steel design.
- Advance knowledge in CNC Technology combined with detailed dimensional accuracies under Internationally accepted Quality Standard has helped to built the modern IS-Series



**METALEX AIMS TO BE A LEADER IN EVERY MARKET WE SERVE.**

## ENGINEERING DATA FOR IS-SERIES ▼

Type of Compressor	IS2	IS3	IS4	IS6
Cylinder Arrangement	V	W	2 x V	2 x W
Number of Cylinder	2	3	4	6
Cylinder bore In Inches (mm)	6.29 (160)			
Piston Stroke In Inches (mm)	4.3 (110)			
Permissible speed RPM Min. 500 RPM Max. 1000 RPM	V Belt Drive			
Swept volume of Suction Gas at 1000 RPM Cu. Ft / min (cu.m/hr)	265.9	398.5	531.1	796.5
Wt. of Compressor with Flywheel in Pounds (kg)	440	540	673	
Direction of Rotation/Looking from oil pump side	Clockwise			
Maximum discharge Pressure - lbs. (Bar)	295 (21)			

## PERFORMANCE CHART FOR IS SERIES ▼

Model	Ammonia (NH <sub>3</sub> )		Freon (R-22)		Ice making capacity Tones / 24 Hrs. with Ammonia	
	Capacity TR	Power Consumption	Capacity TR	Power Consumption	TPD	KW
IS 2	97.0	51.0	81.3	55.0	17.7	39.5
IS 3	145.5	75.5	121.9	82.0	26.4	58.0
IS 4	194.0	101.5	162.6	108.0	35.5	75.0
IS 6	291.0	151.22	243.9	161.0	52.8	110.2

### Notes:

Figures mentioned here are at 1000 RPM. The performance data is for guideline only.

1. Capacity at +10°C Evaporation +40 °C, 0°C Superheating. 2. At 15°C Evaporation +40°C, 0°C Superheating. For other specific details please contact us.

## SYSTEM ACCESSORIES ►

## DESIGN ADVANTAGES ▼

Valves

Crankcase Heater

Pressure Cutouts

Spare Parts & Special Tools

Belt & Motor Pulleys

Base Frame

Pressure Gauge

Oil Separator

Quickly adaptable to varying operation conditions  
Each cylinder is equipped with a hydraulically operated valve lifting mechanism giving absolute reliable capacity control & 100% unloaded starting

Easy Maintenance as piston and connecting rod assembly can be removed without removing the cylinder liner.

Minimum Oil Consumption is ensured by providing three compression rings and two oil scraper rings per piston, thus minimizing oil flow through discharge gas line.

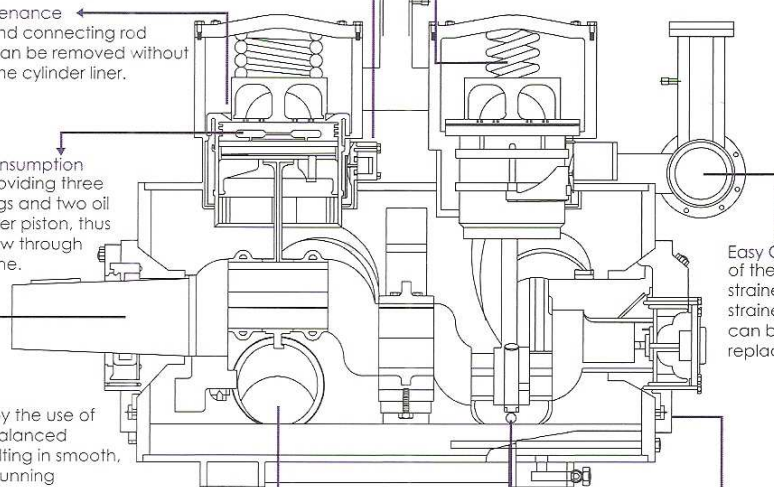
Quick Cooling is guaranteed by the use of dynamically - balanced crankshaft, resulting in smooth, vibration - free running

Quick Maintenance Parts subjected to maximum wear are easily accessible through large service doors with minimum need of special tools.

Easy Monitoring is ensured by built-in-sight glass, making oil return flow visible

Trouble-free Long running Life due to highly effective Oil purification by two oil filters.

Total Safety is ensured by built-in arrangement of cylinder head spring which protects compressor from incidental liquid hammer



Visit us on:  
[www.metalexgroup.com](http://www.metalexgroup.com)

**Metalex Cryogenics Ltd.**

Regd. Office :

407, Bhakti Plaza, Bremen Square, Aundh, Pune - 411 007, Maharashtra, India.

**Metalex Cryogenic Ltd.**

(Formerly: Metalex Process Equipments India Pvt. Ltd.)

Phone : + 91 - 020 - 25881117    Telefax : + 91 - 020 - 25881118

Email : [sales@metalexgroup.com](mailto:sales@metalexgroup.com)

